



THE CYPRESS  
of Charlotte



CAMPUS & HOME PLANS

# Features

## ALL CYPRESS HOMES INCLUDE

- Large Windows
- Individual thermostat controls
- Washer and dryer
- Emergency response system
- Heavy soundproofing construction
- Smoke and fire alarms (with sprinklers in Villa buildings)
- Fully equipped kitchens including:
  - Refrigerator with ice maker
  - Four burner range/oven
  - Full sized dishwasher
  - Garbage disposal
  - Microwave oven
- High ceilings (approximately 9 ft. minimum in main rooms)
- Separate storage areas
- Cable TV

PURCHASERS MAY MAKE CHANGES AND MODIFICATIONS UPON APPROVAL

# The Cypress

## CAMPUS & HOME PLANS

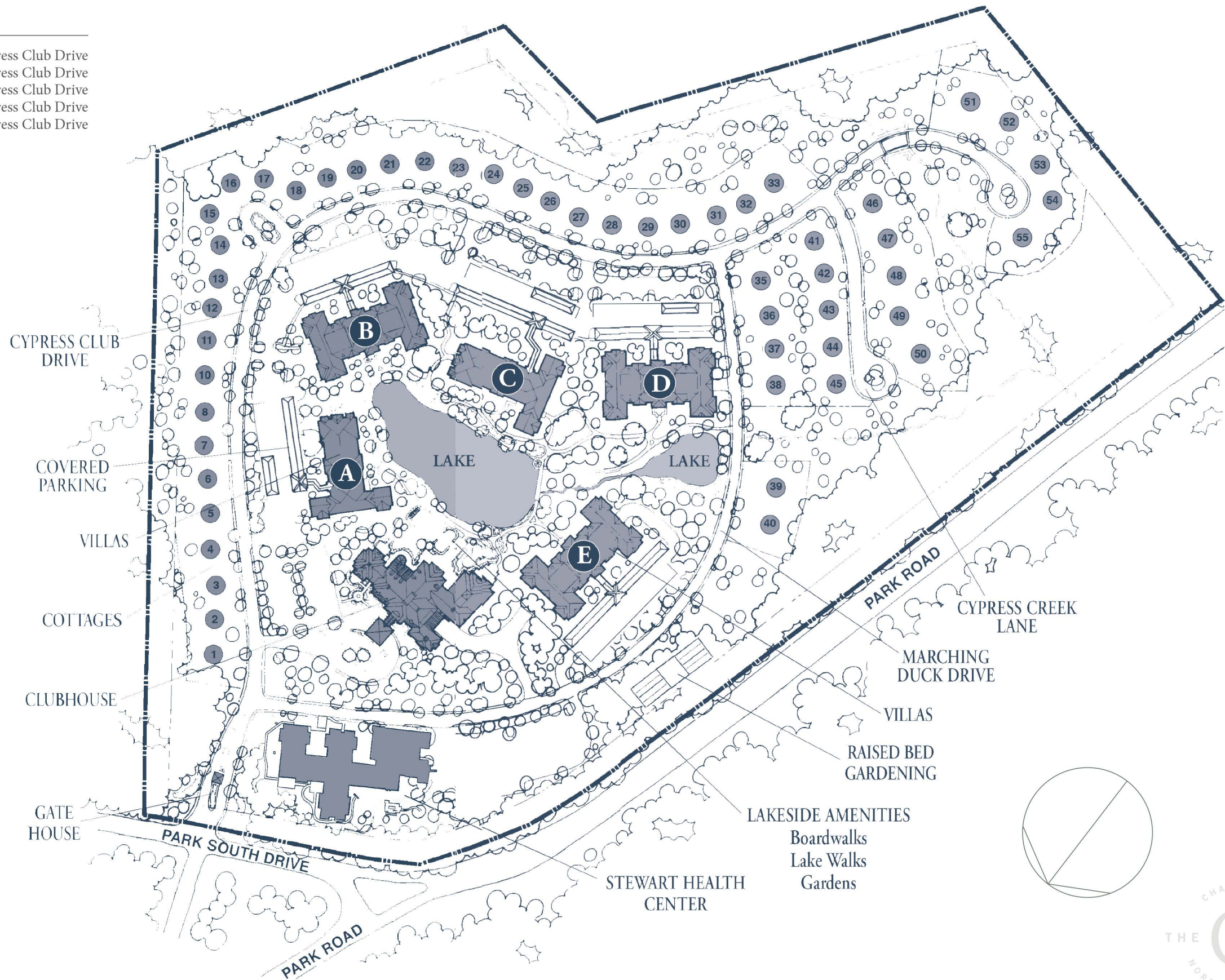
TABLE OF CONTENTS	
CAMPUS PLAN	4
BUILDING A	6
BUILDING C	8
BUILDING A & C FLOORPLANS	10
BUILDING B, D, & E	13
BUILDING B, D & E FLOORPLANS	16
THE COTTAGES	20
NOTES	26

The plan for The Cypress takes into account the beautiful surroundings of our 60 acre site, easy accessibility to every facility, and a sense of privacy that is natural to our enclosed campus. The Cypress, a community planned for you to thoroughly enjoy.



# Campus Plans

Cottage No.	Street Address	Villa Bldg	Street Address
1	3427 Cypress Club Drive	A	3518 Cypress Club Drive
2	3433 Cypress Club Drive	B	3600 Cypress Club Drive
3	3445 Cypress Club Drive	C	3716 Cypress Club Drive
4	3501 Cypress Club Drive	D	3738 Cypress Club Drive
5	3509 Cypress Club Drive	E	7035 Cypress Club Drive
6	3509 Cypress Club Drive		
7	3513 Cypress Club Drive		
8	3517 Cypress Club Drive		
10	3525 Cypress Club Drive		
11	3529 Cypress Club Drive		
12	3603 Cypress Club Drive		
13	3607 Cypress Club Drive		
14	3611 Cypress Club Drive		
15	3615 Cypress Club Drive		
16	3619 Cypress Club Drive		
17	3623 Cypress Club Drive		
18	3627 Cypress Club Drive		
19	3631 Cypress Club Drive		
20	3635 Cypress Club Drive		
21	3639 Cypress Club Drive		
22	3643 Cypress Club Drive		
23	3647 Cypress Club Drive		
24	3705 Cypress Club Drive		
25	3709 Cypress Club Drive		
26	3715 Cypress Club Drive		
27	3721 Cypress Club Drive		
28	3727 Cypress Club Drive		
29	3733 Cypress Club Drive		
30	3805 Cypress Club Drive		
31	3809 Cypress Club Drive		
32	3813 Cypress Club Drive		
33	3817 Cypress Club Drive		
35	7128 Marching Duck Drive		
36	7126 Marching Duck Drive		
37	7122 Marching Duck Drive		
38	7118 Marching Duck Drive		
39	7114 Marching Duck Drive		
40	7110 Marching Duck Drive		
41	7121 Cypress Creek Lane		
42	7117 Cypress Creek Lane		
43	7113 Cypress Creek Lane		
44	7107 Cypress Creek Lane		
45	7103 Cypress Creek Lane		
46	7120 Cypress Creek Lane		
47	7116 Cypress Creek Lane		
48	7112 Cypress Creek Lane		
49	7108 Cypress Creek Lane		
50	7104 Cypress Creek Lane		
51	3837 Cypress Club Drive		
52	3841 Cypress Club Drive		
53	3845 Cypress Club Drive		
54	3849 Cypress Club Drive		
55	3853 Cypress Club Drive		

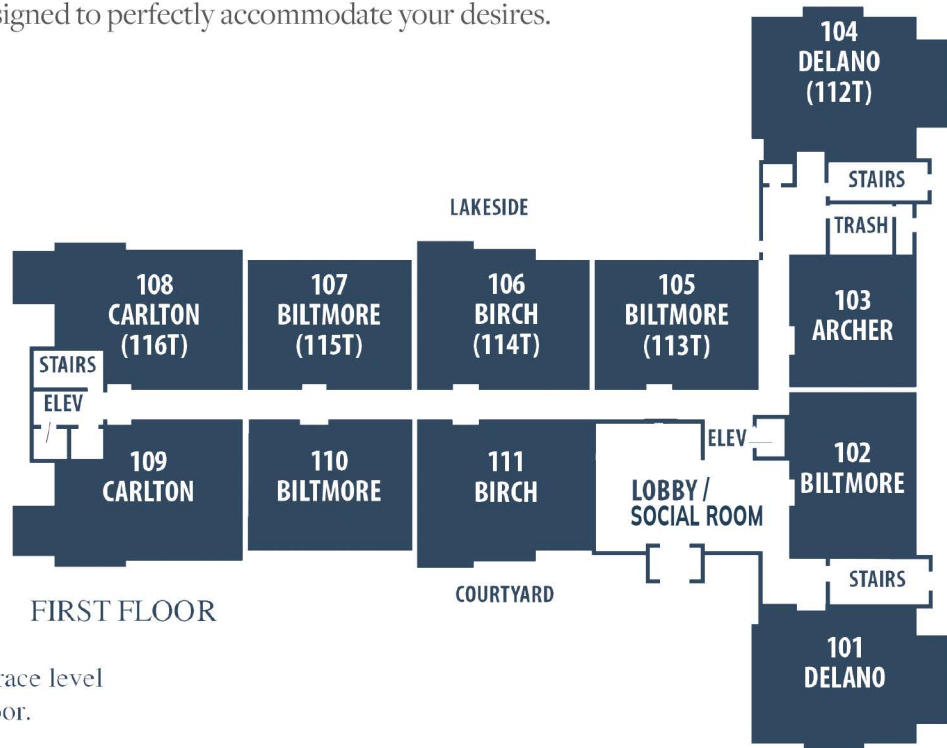


# Building A

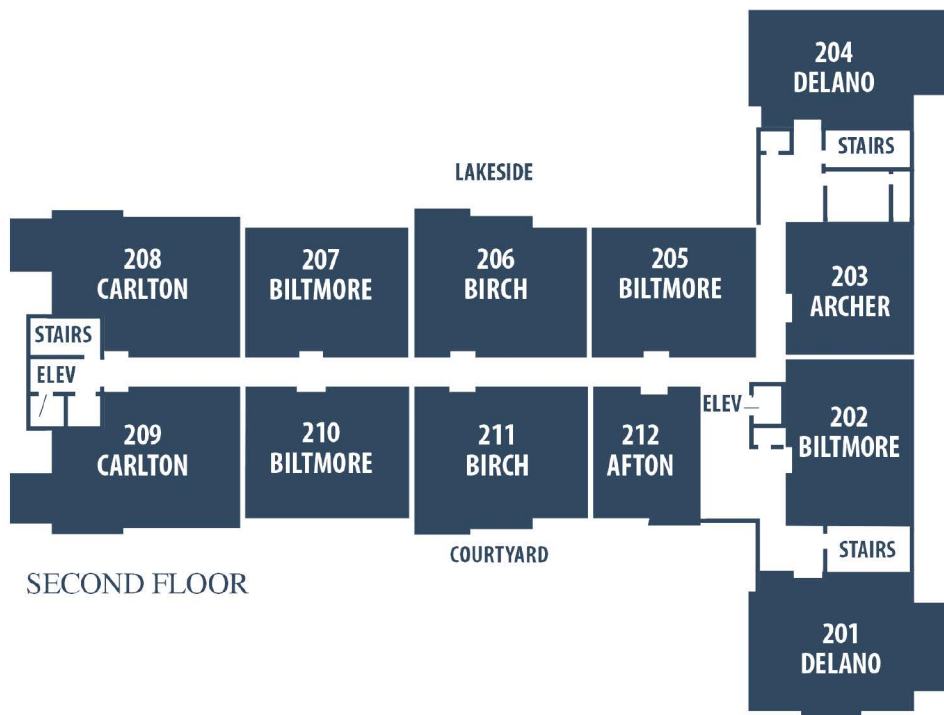
Low-rise, residential-style villas are all serviced by elevators and offer six individual designs, with one-and two-bedroom and one-and two-bedroom/Carolina Room floor plans.

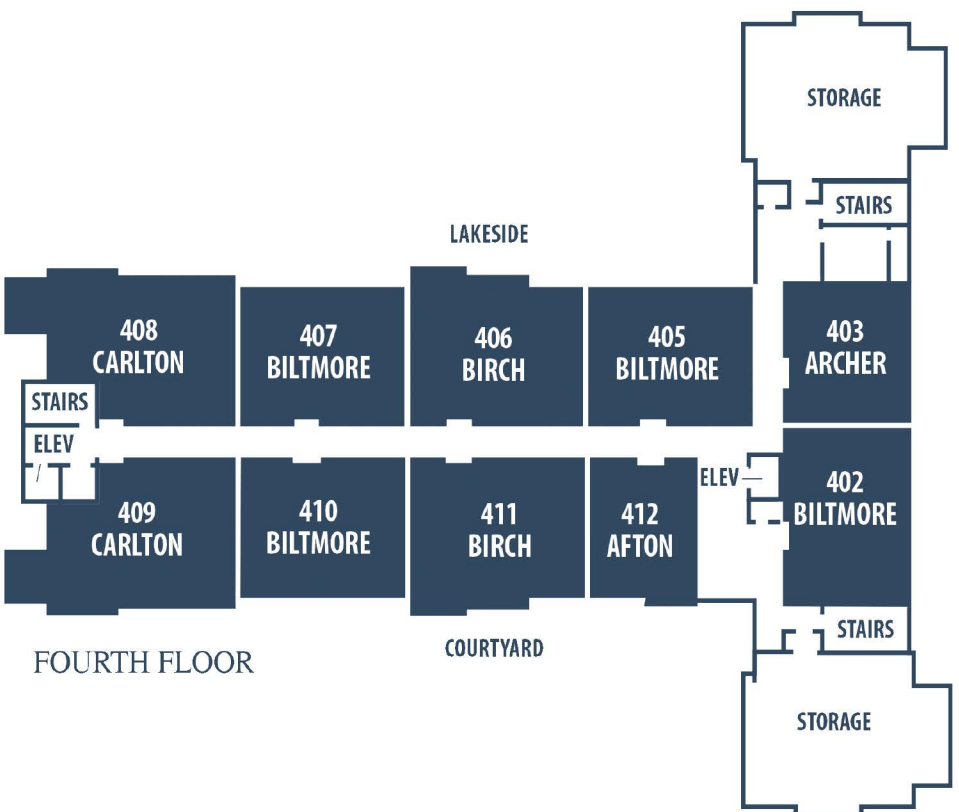
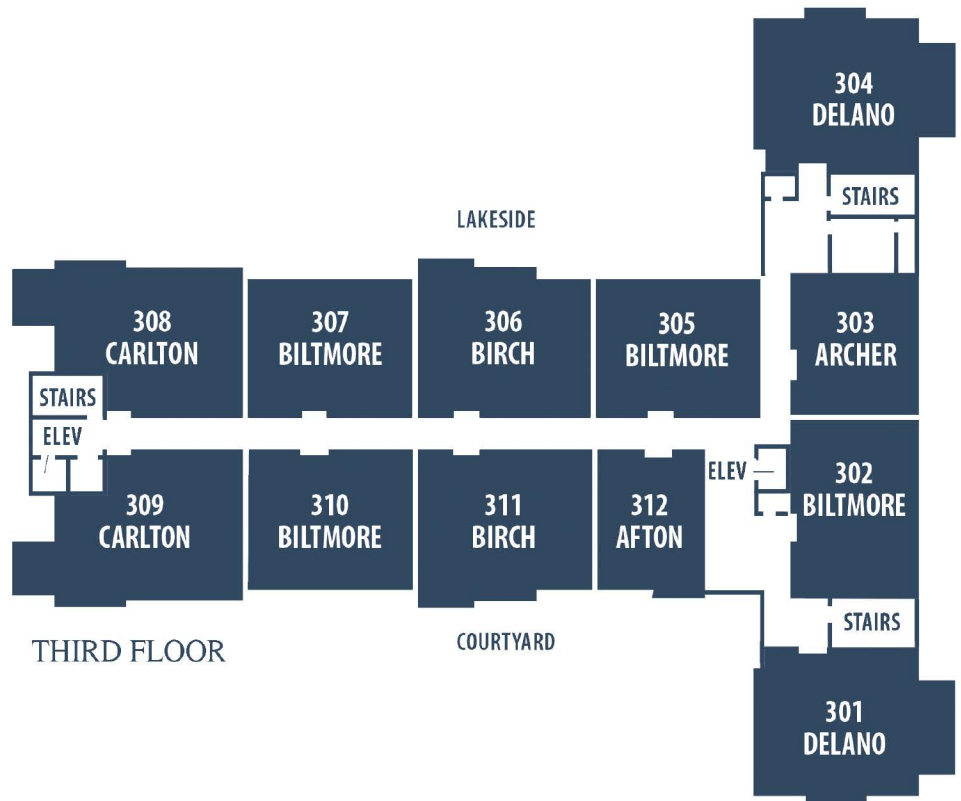
A sample of the features include lake and courtyard views, full kitchens, washer and dryer, and ample storage. Covered parking is offered as an attractive option.

The floor plans were designed to perfectly accommodate your desires.



Note: T indicates terrace level below first floor.





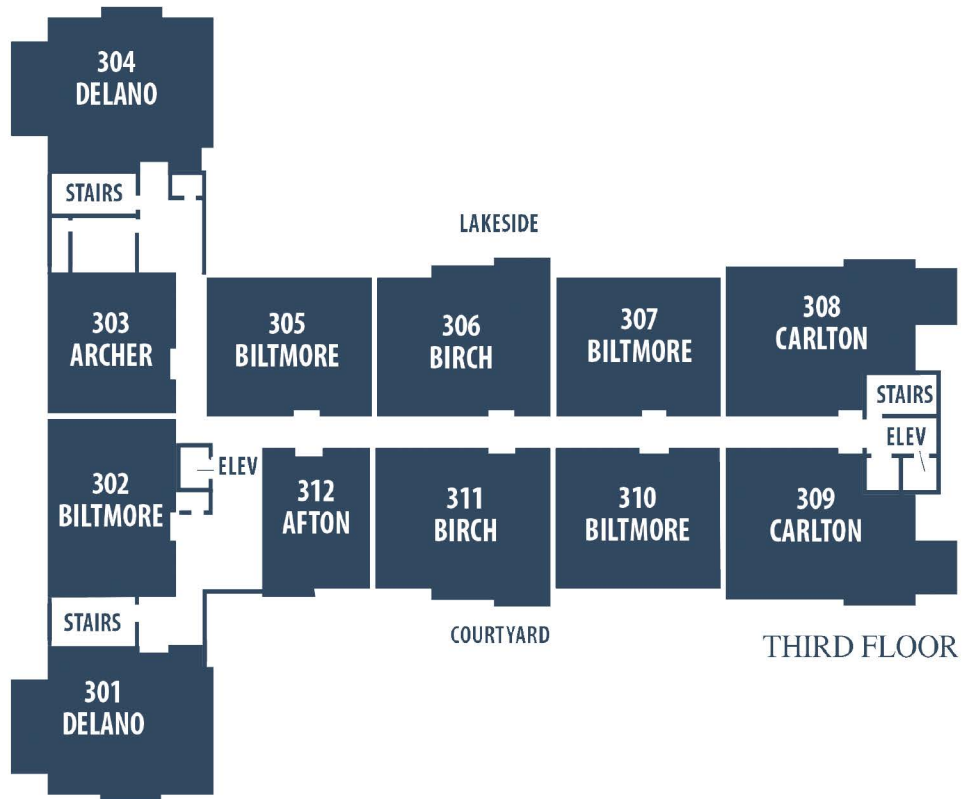
# Building C

Low-rise, residential-style villas are all serviced by elevators and offer six individual designs, with one and two bedroom floorplans, many with multiple living areas.

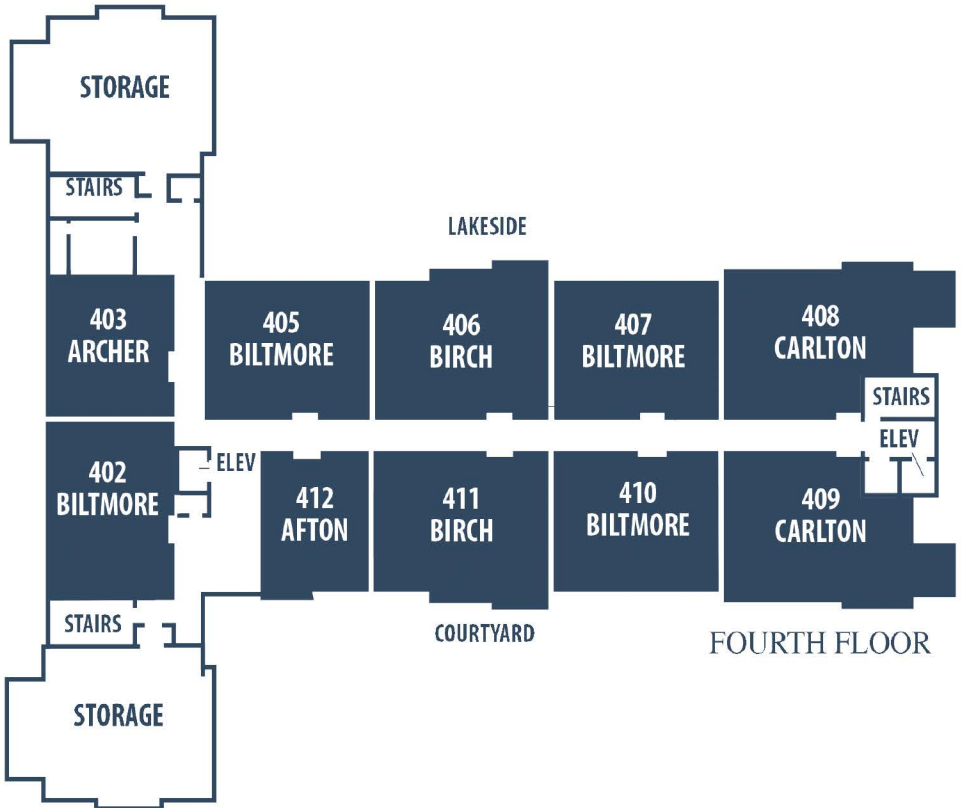
A sample of the features include lake and courtyard views, full kitchens, washer and dryer, and ample storage. Covered parking is offered as an attractive option.

The floor plans were designed to perfectly accommodate your desires.





THIRD FLOOR



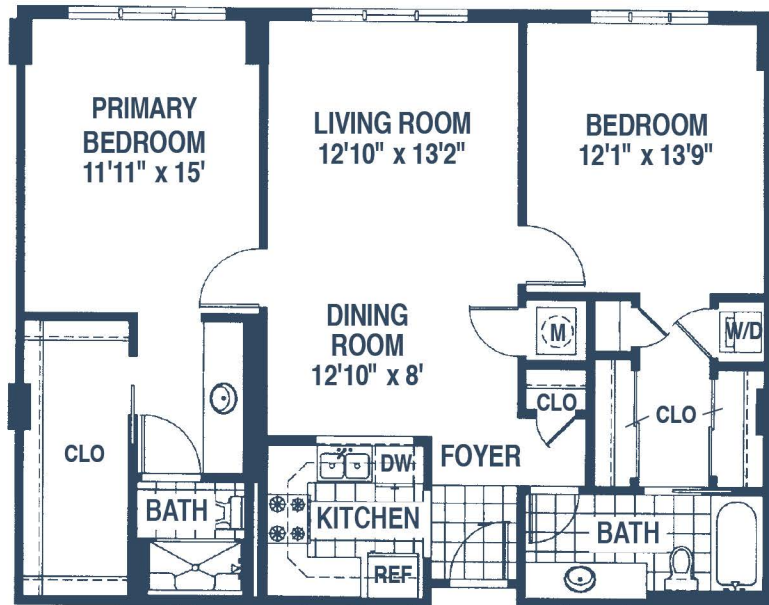
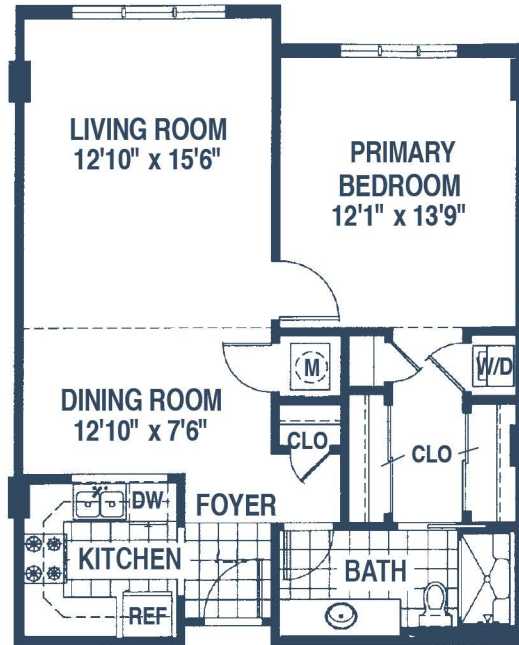
FOURTH FLOOR





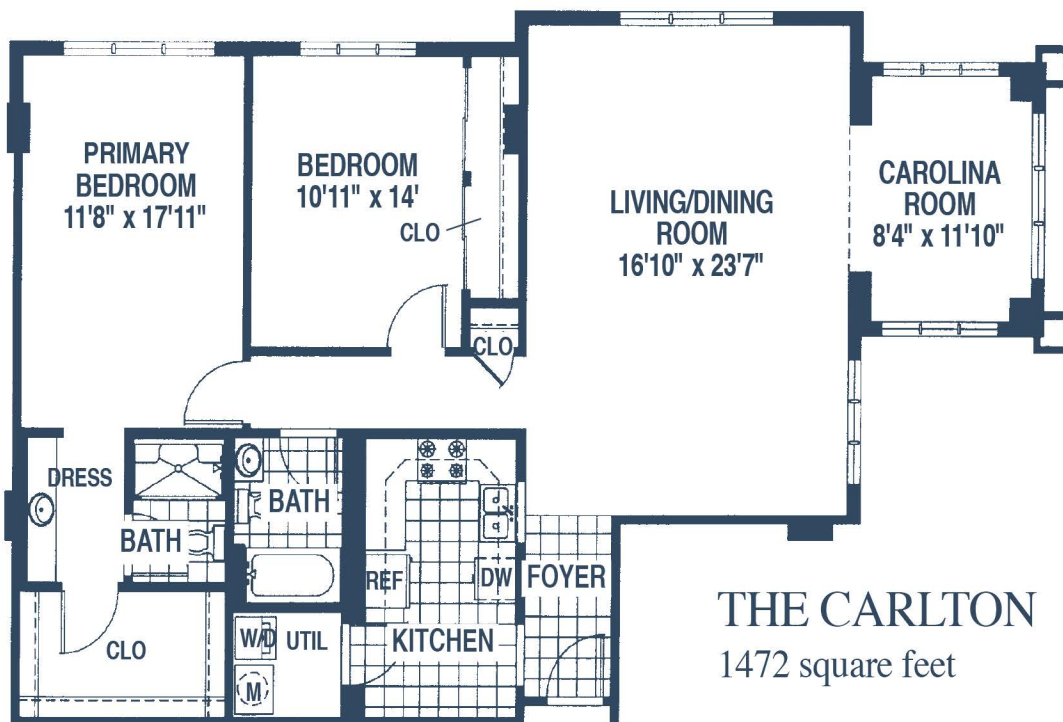
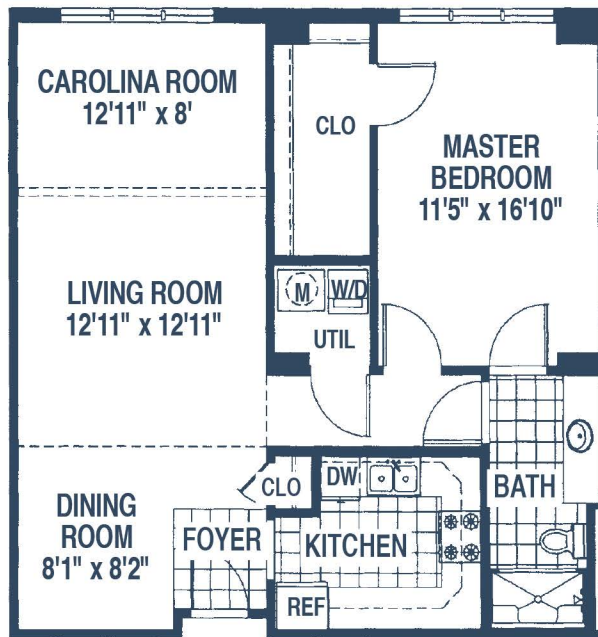
# Buildings A & C

**THE AFTON**  
810 square feet



**THE BILTMORE**  
1160 square feet

**THE ARCHER**  
929 square feet



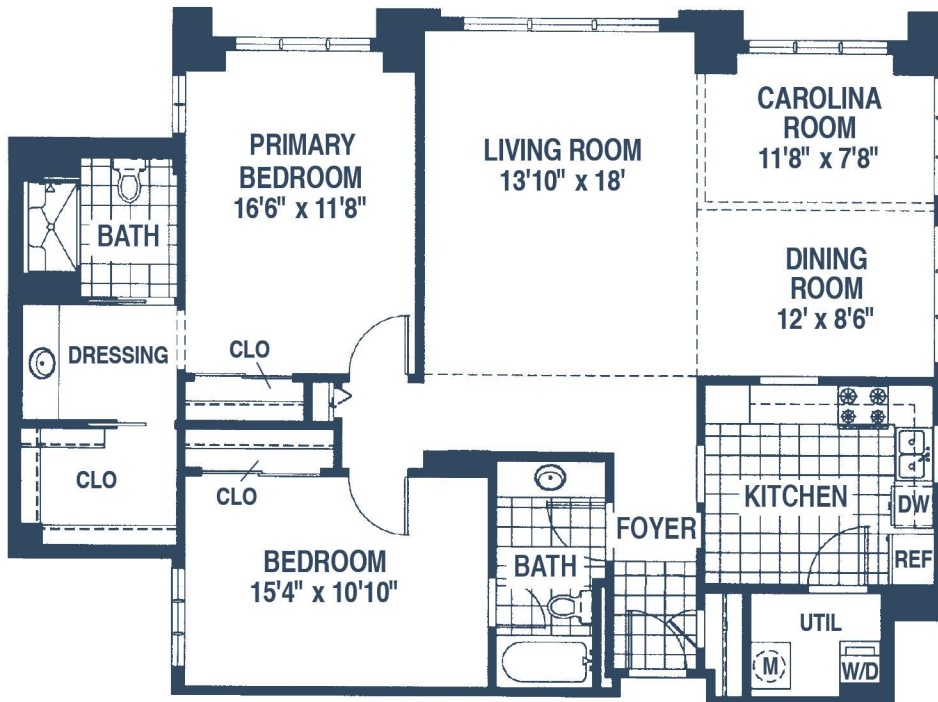
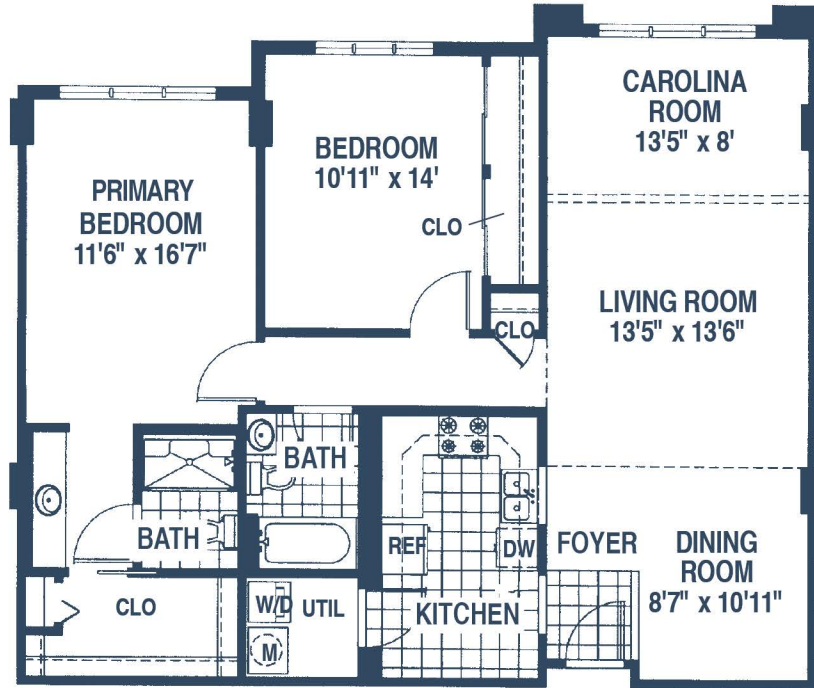
**THE CARLTON**  
1472 square feet

*All square footages are approximate. Modifications may be made in some individual units.*



# Buildings A & C

**THE BIRCH**  
1315 square feet

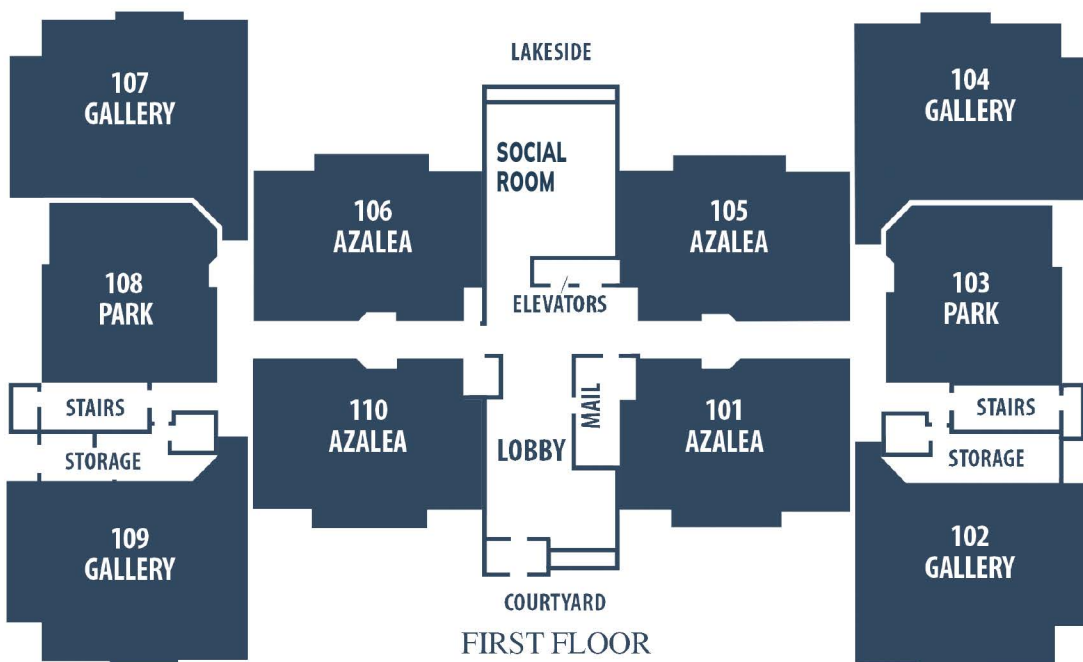
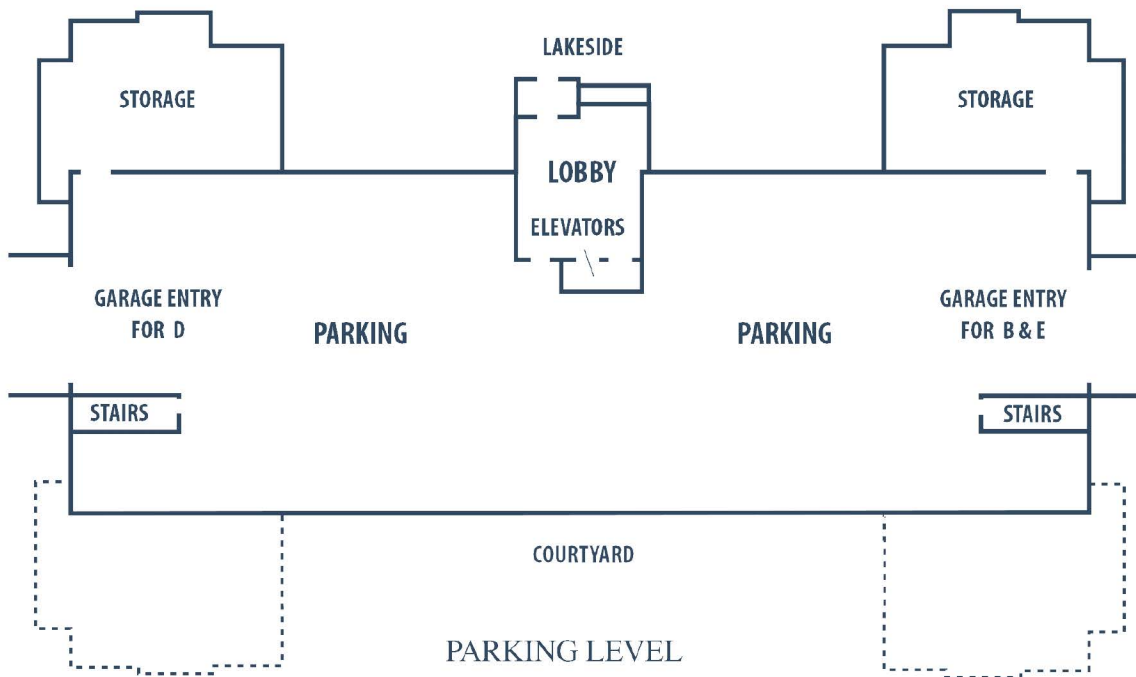


**THE DELANO**  
1495 square feet

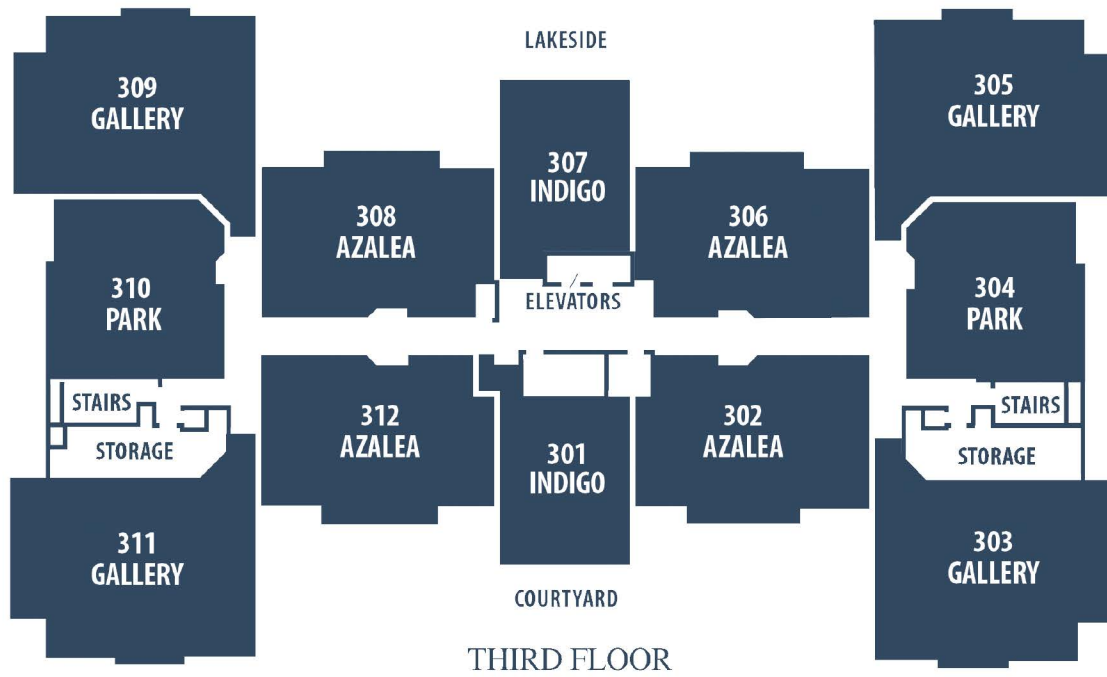
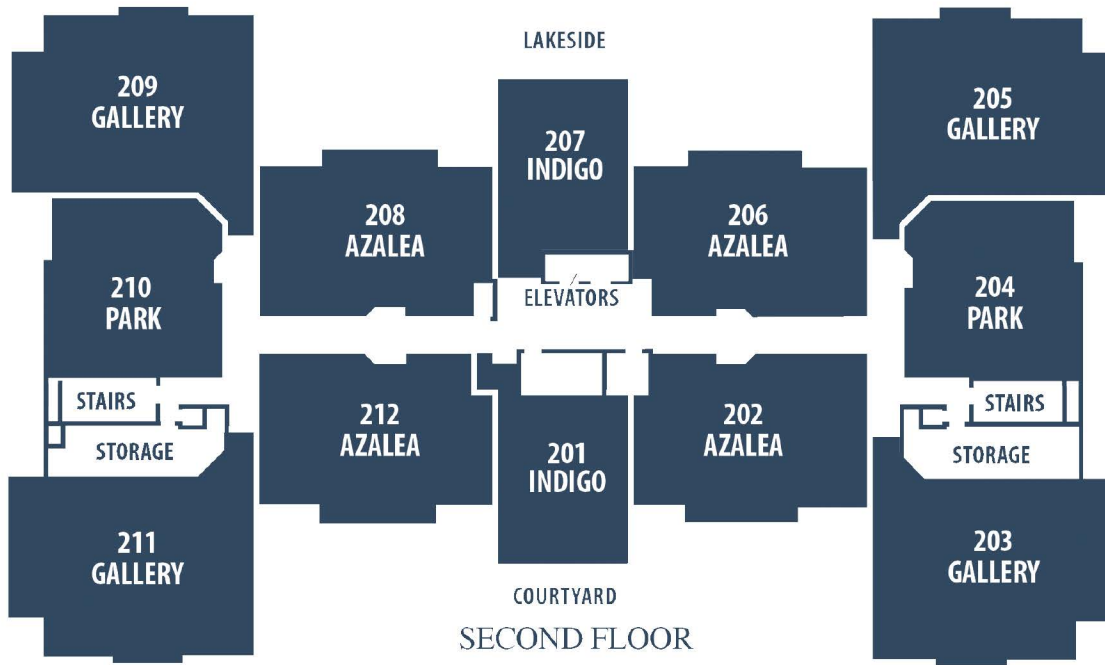
*All square footages are approximate. Modifications may be made in some individual units.*

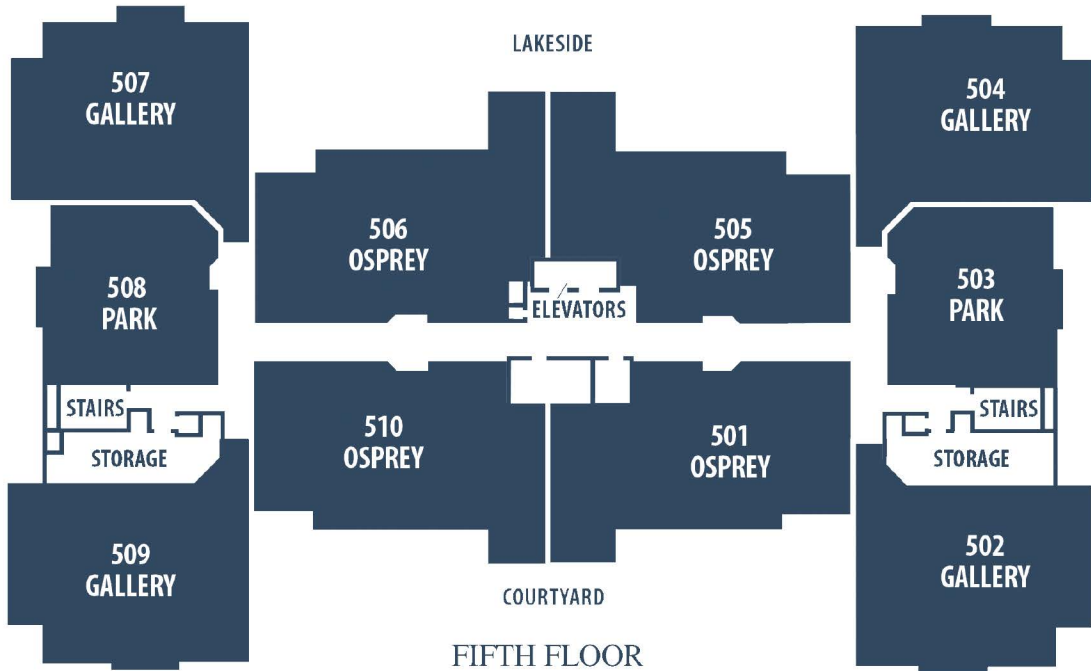
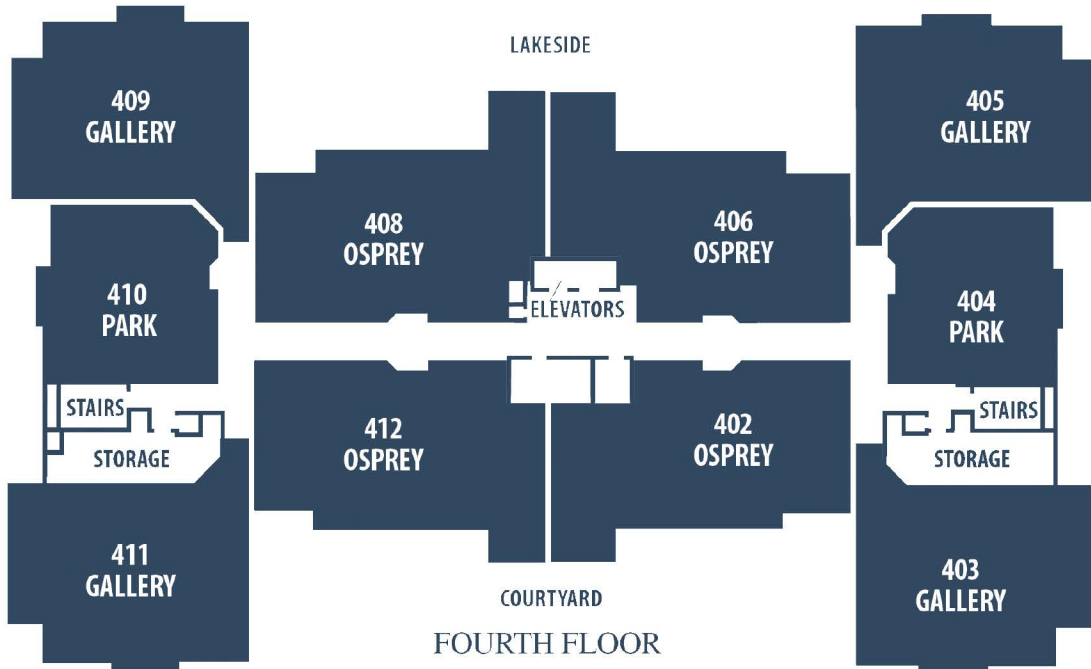
# Buildings B, D & E

A new standard for size, spaciousness and luxury is set by the Villas at The Cypress. A sample of some of the features are 24 foot wide living rooms, balconies, powder rooms, walk-in storage rooms, and large kitchens and baths. Beautiful views are of lakes and gardens.



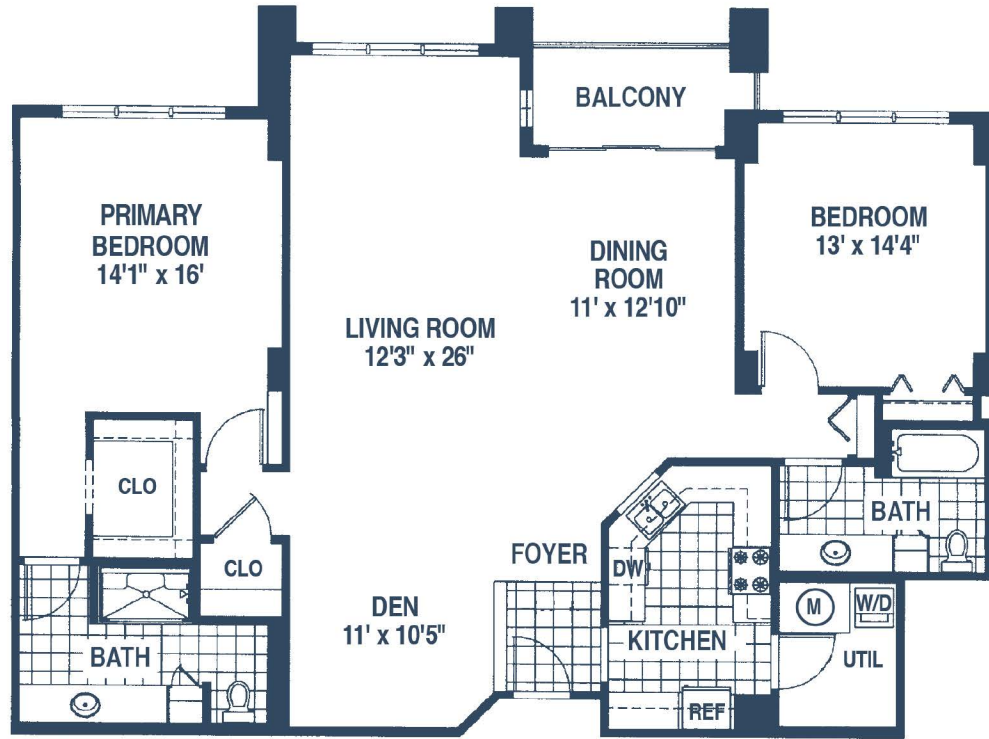
# Buildings B, D & E



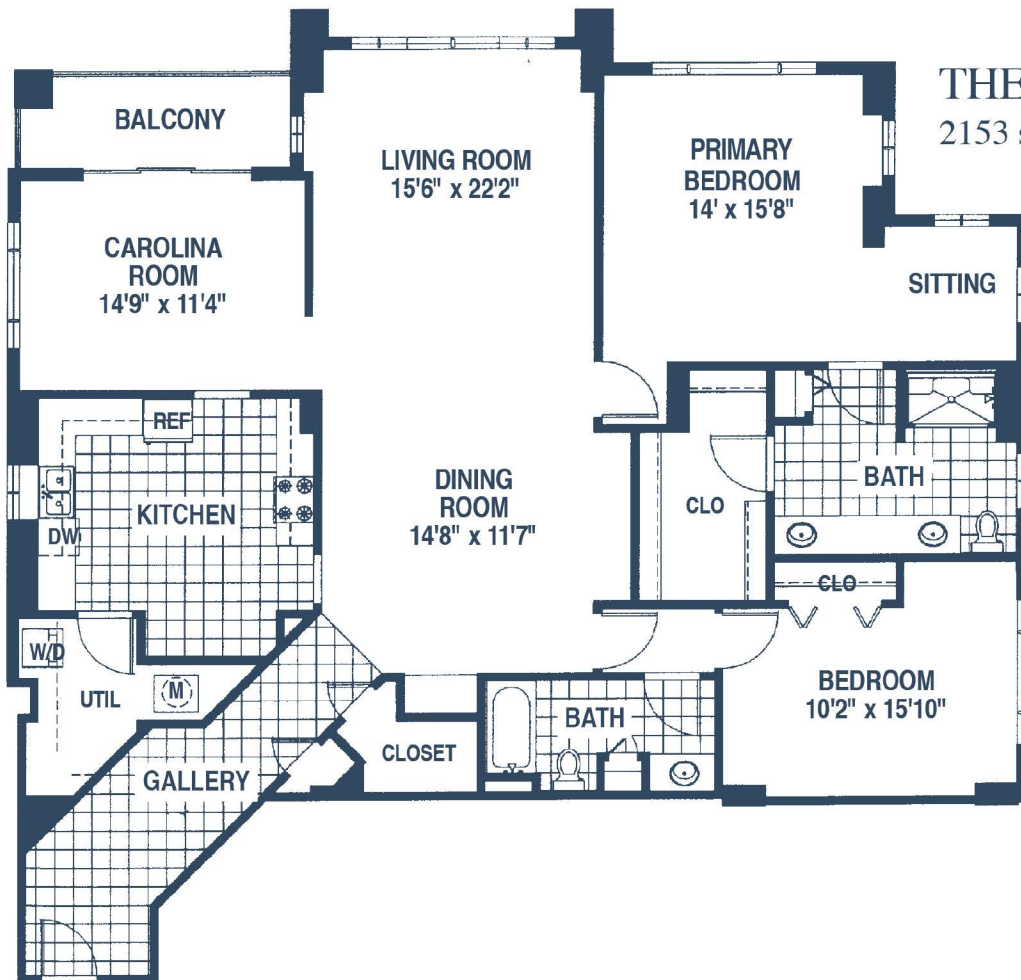


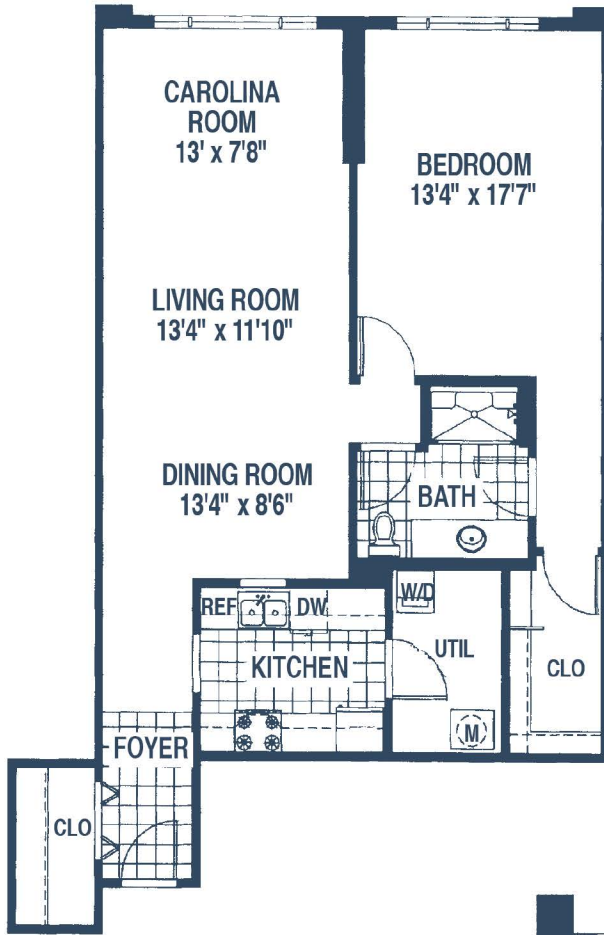
# Buildings B, D & E

**THE AZALEA**  
1756 square feet

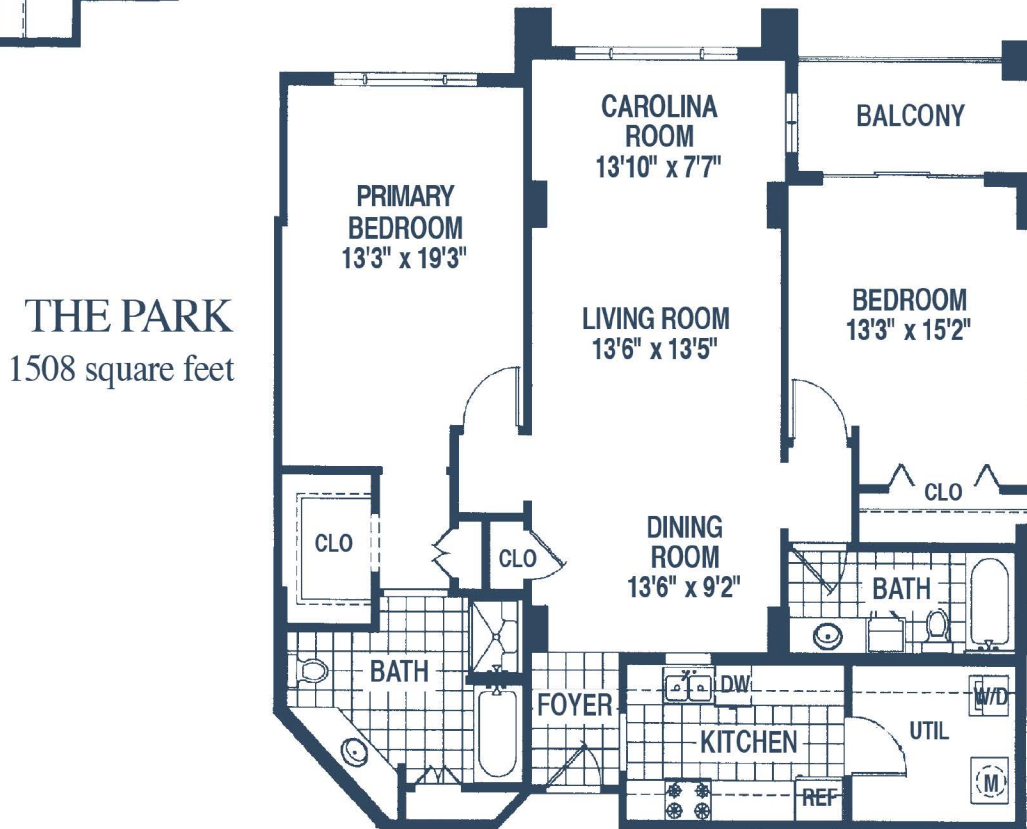


**THE GALLERY**  
2153 square feet





**THE INDIGO**  
1118 square feet



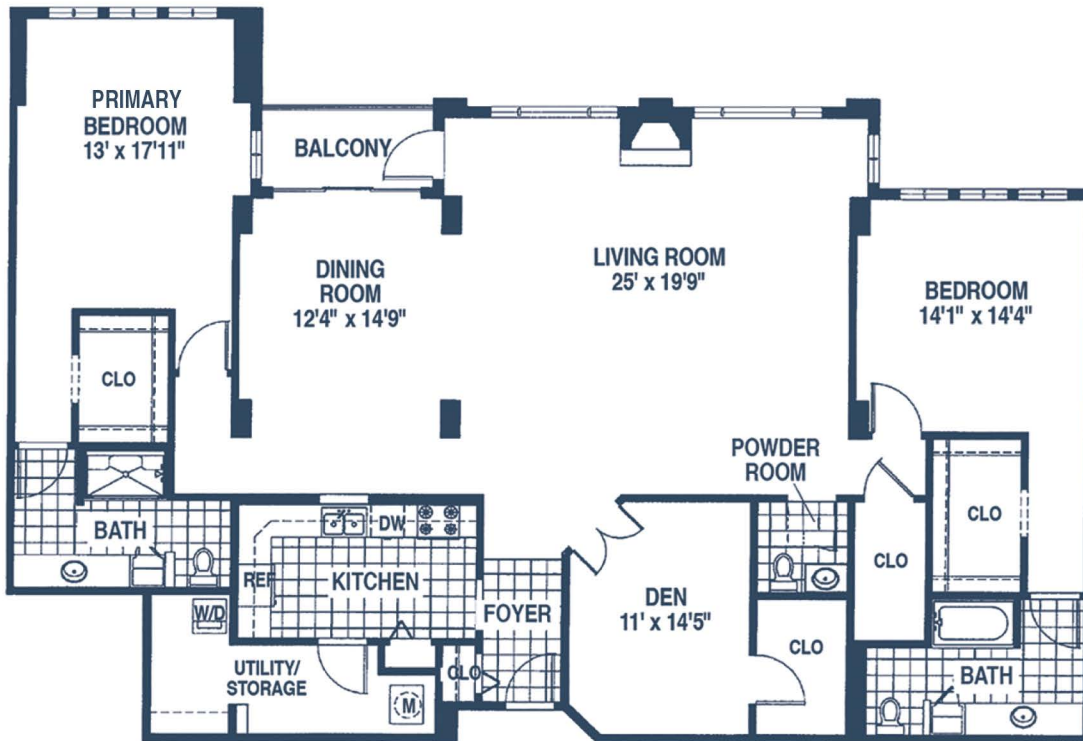
**THE PARK**  
1508 square feet



All square footages are approximate. Modifications may be made in some individual units.

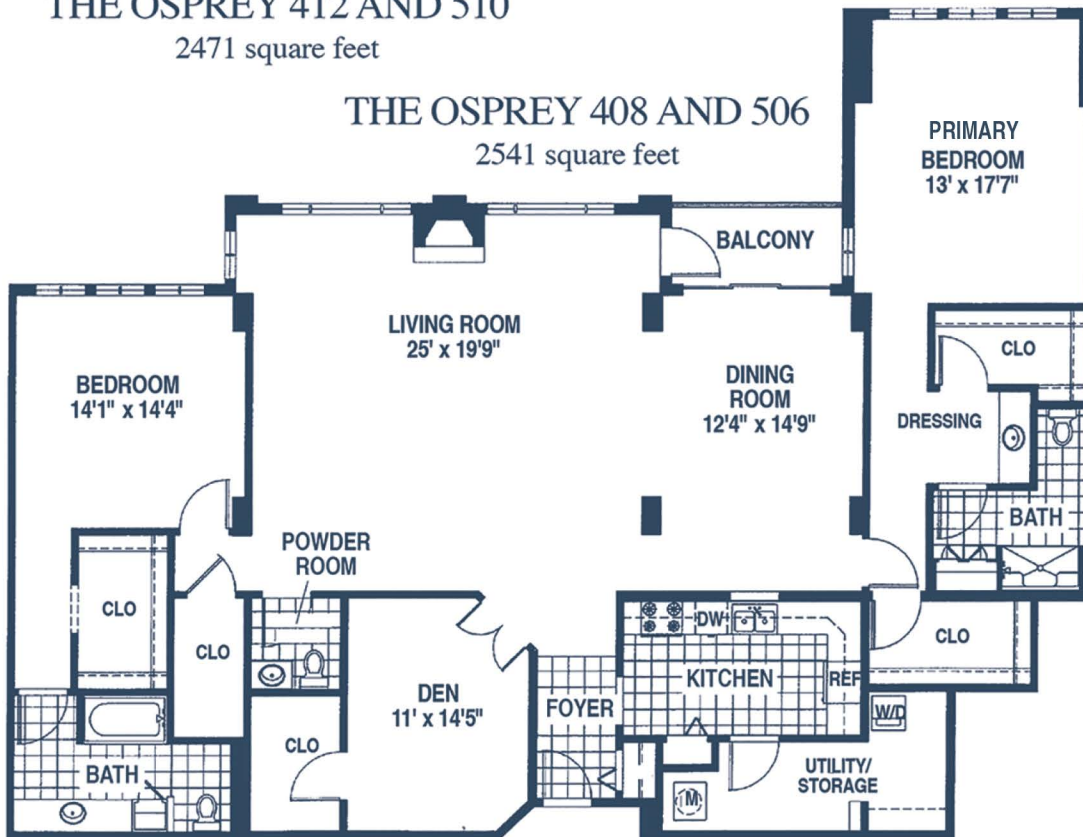


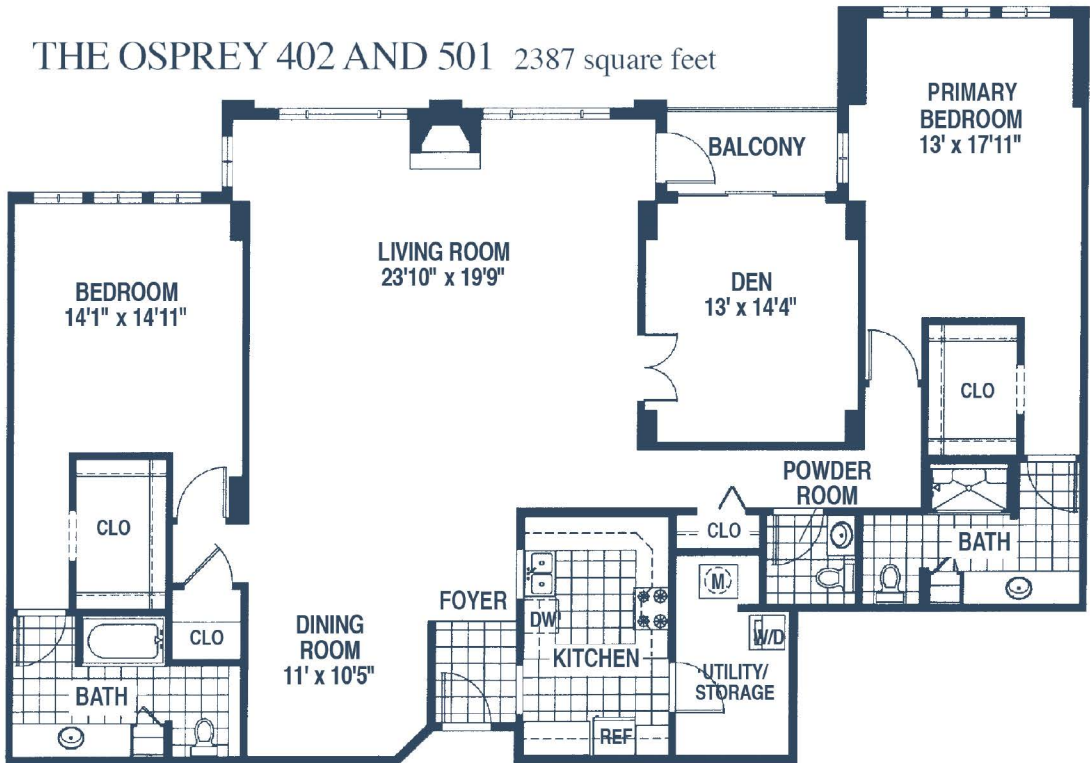
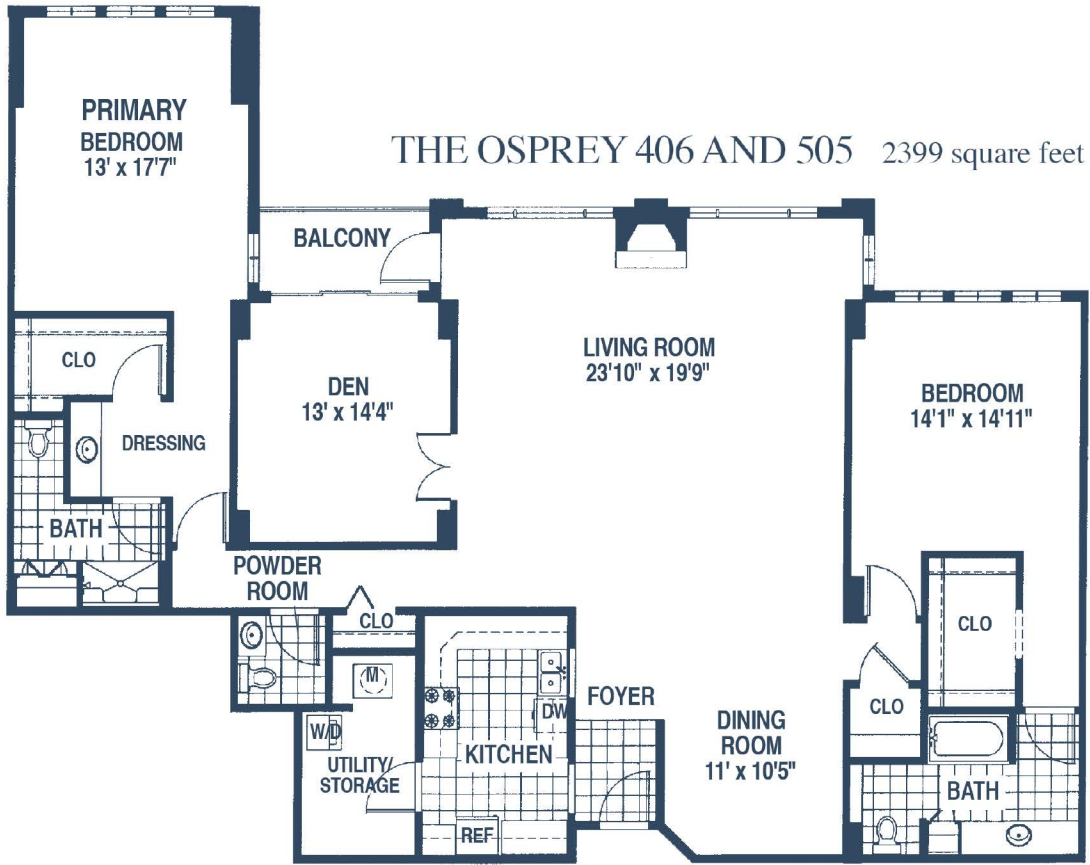
# Buildings B, D & E



THE OSPREY 412 AND 510  
2471 square feet

THE OSPREY 408 AND 506  
2541 square feet

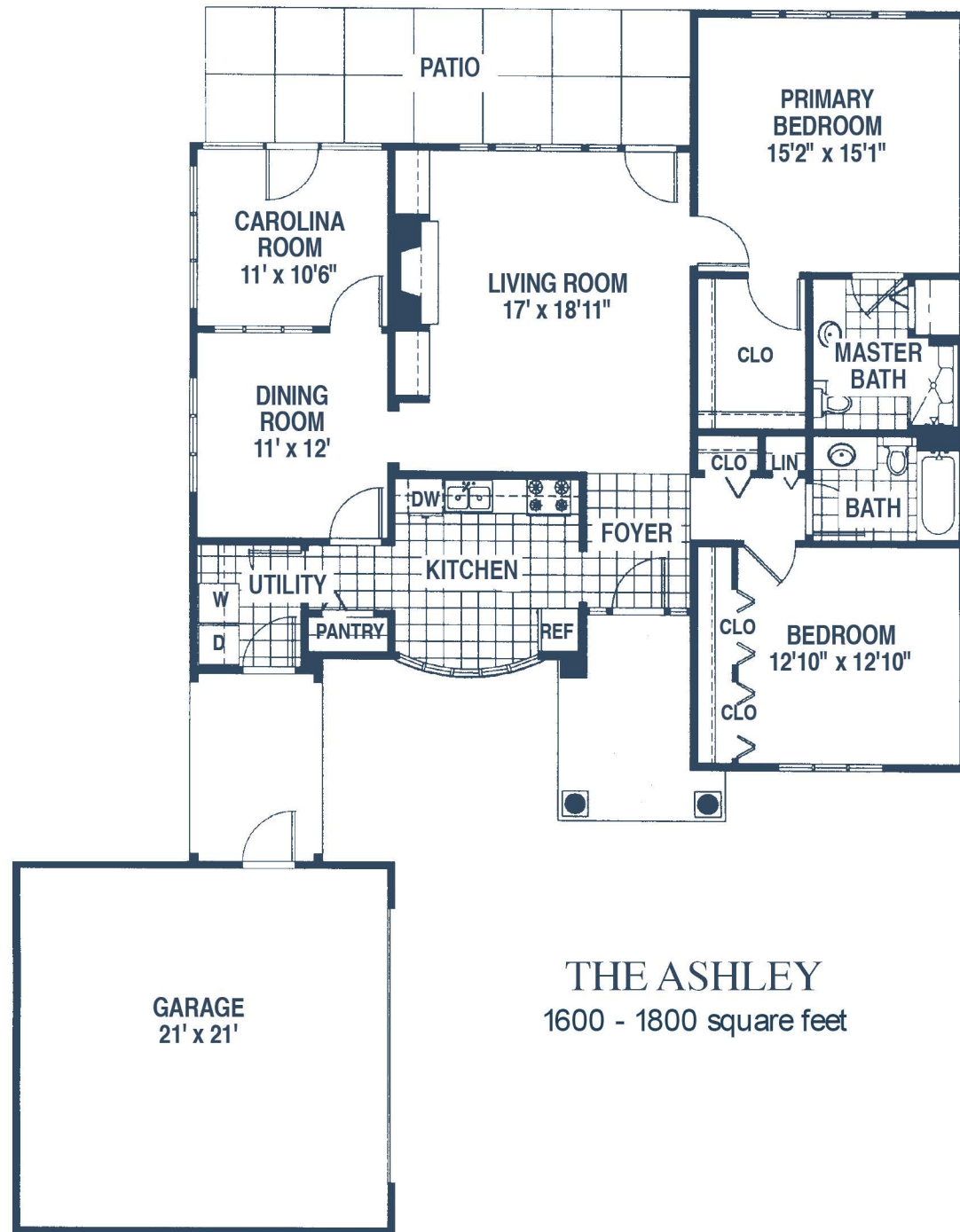


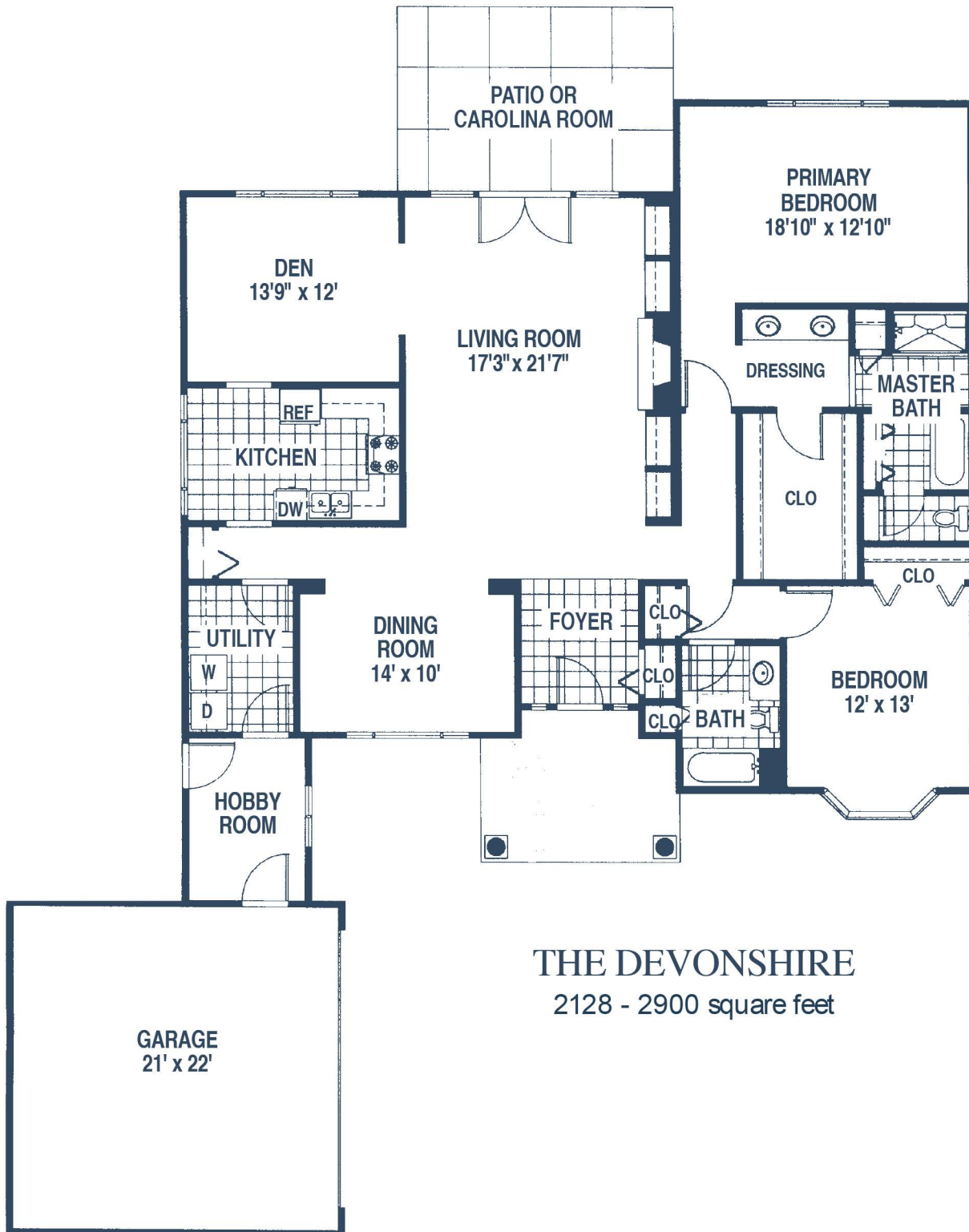


# The Cottages

The Cottages are elegant homes with garages. All have private yards. Six floor plans allow you to select the style that suits you best. Many cottages will have extensive custom features and modifications.

Highlights include fireplaces, plenty of storage, exceptional interior design, and low-maintenance exteriors. All cottages have 2-car garages. Both exterior and interior maintenance is taken care of by The Cypress.



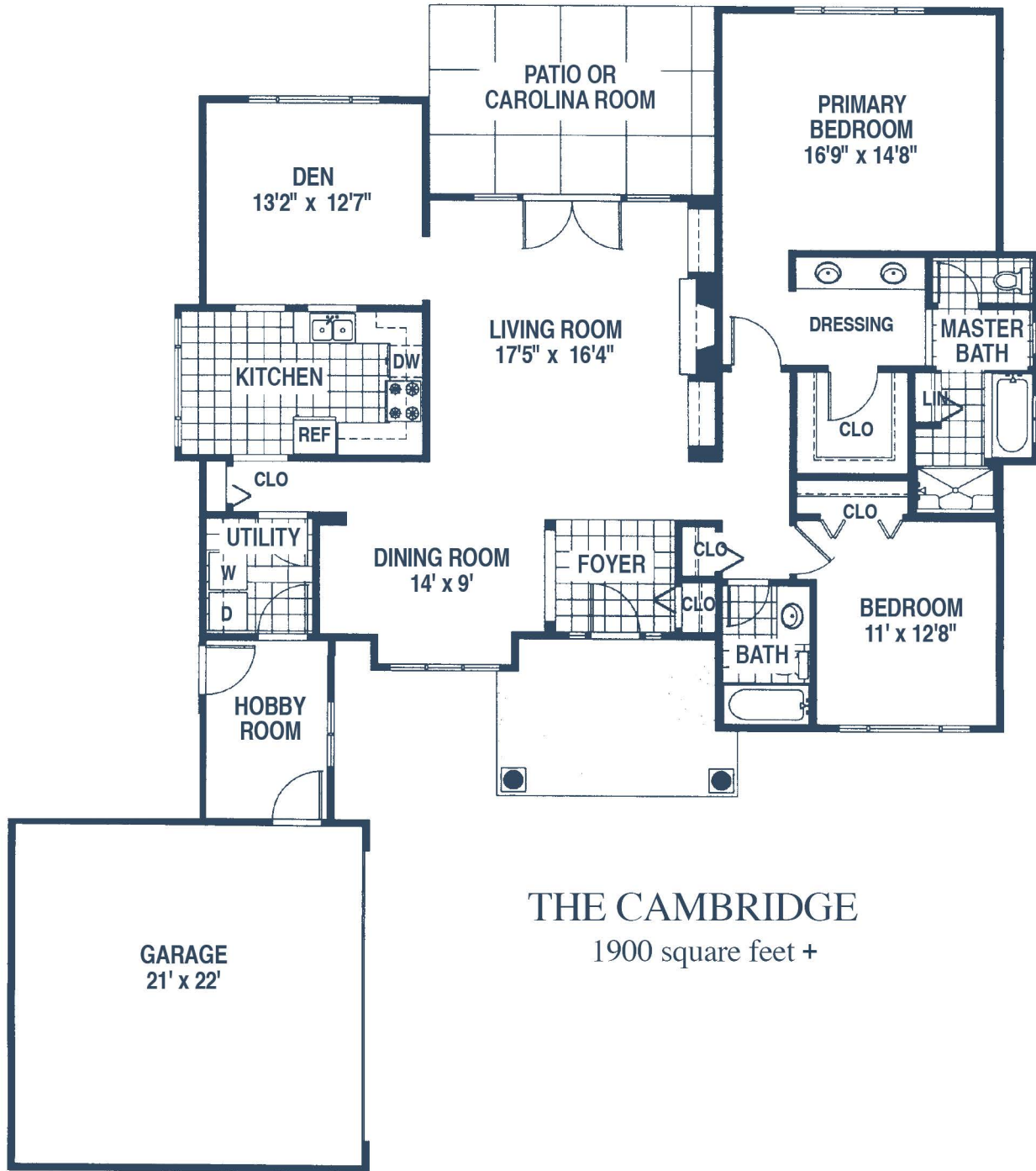


**THE DEVONSHIRE**  
2128 - 2900 square feet

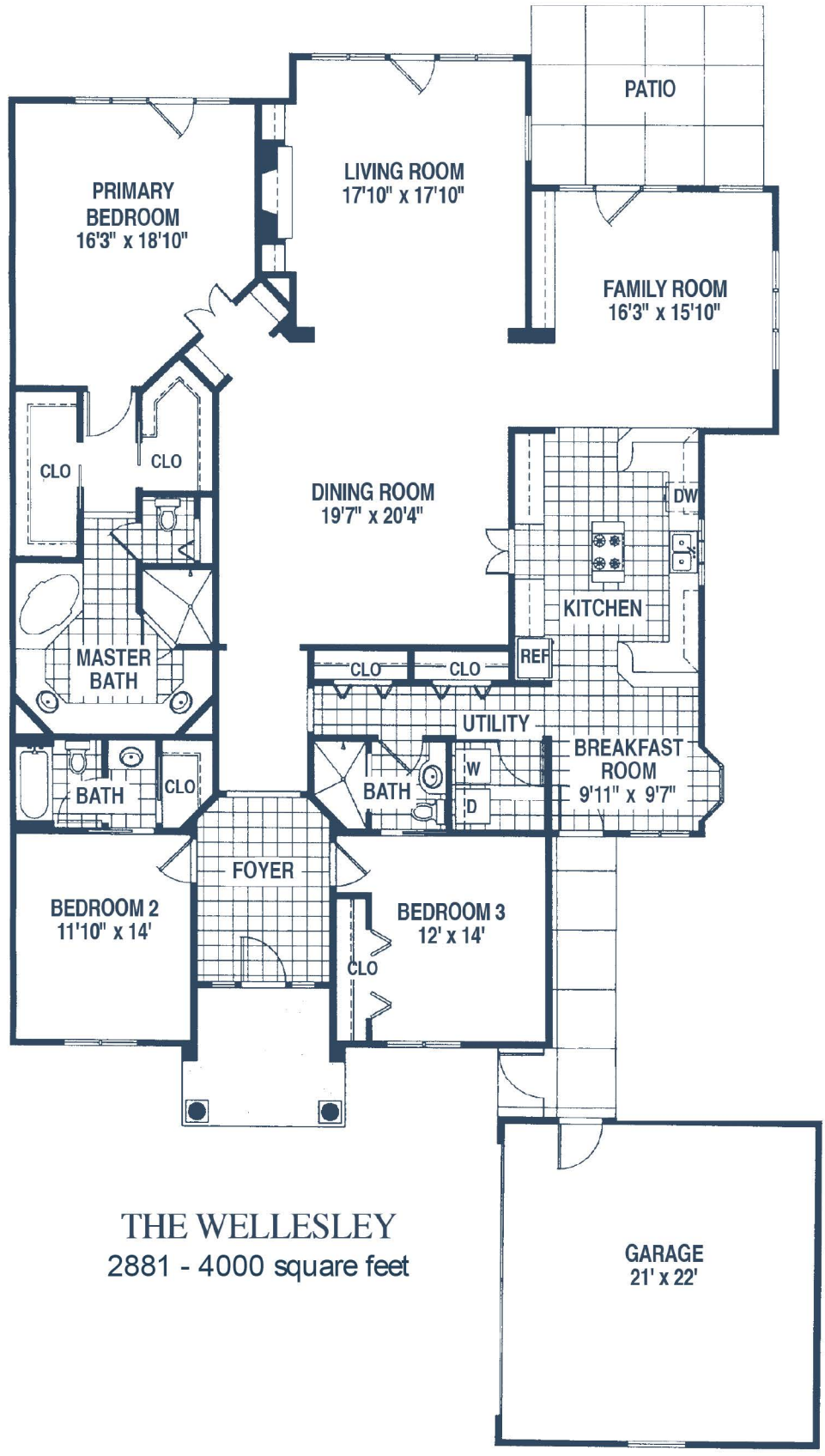
*All square footages are approximate. Shown here are basic floorplans. Many Cottages will have individual modifications.*



# The Cottages



**THE CAMBRIDGE**  
1900 square feet +

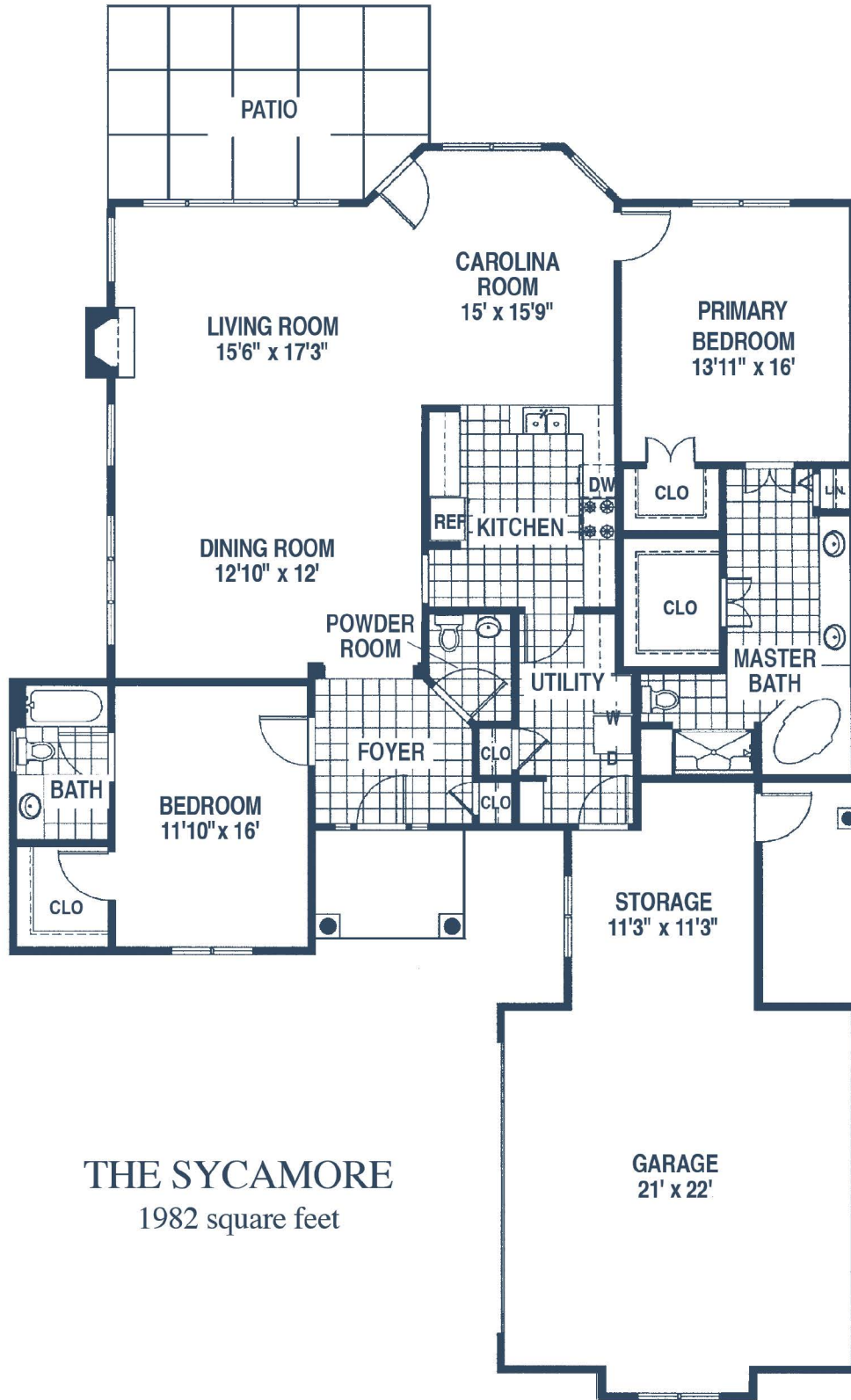


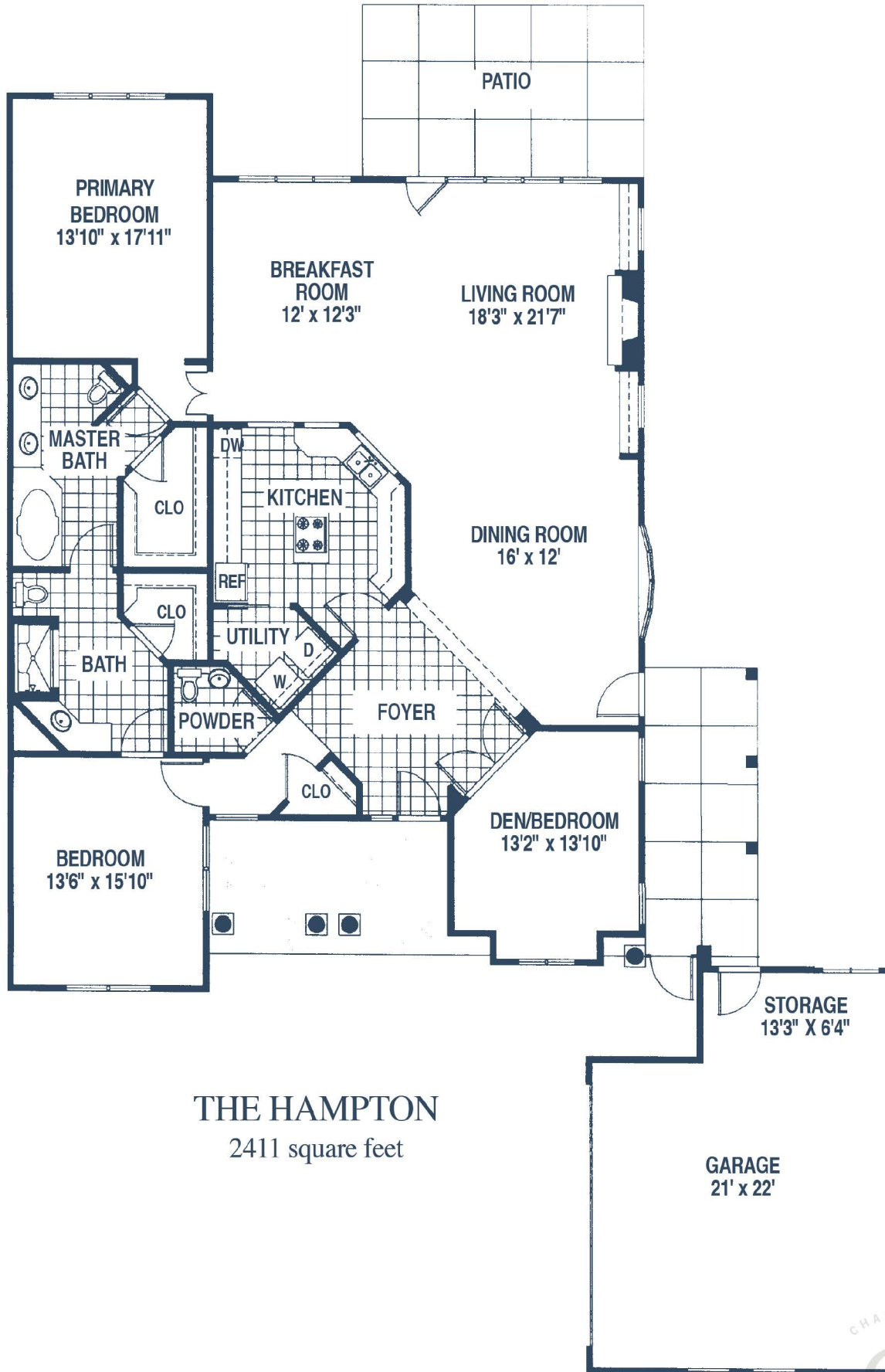
**THE WELLESLEY**  
2881 - 4000 square feet

All square footages are approximate. Shown here are basic floorplans. Many Cottages will have individual modifications.



# The Cottages





**THE HAMPTON**  
2411 square feet

*All square footages are approximate. Shown here are basic floorplans. Many Cottages will have individual modifications.*





# Notes

# Notes





3442 CYPRESS CLUB DRIVE, CHARLOTTE, NC 28210

TEL - 704.714.5500

[thecypressofcharlotte.com](http://thecypressofcharlotte.com)

